

National Equity Atlas

Data Disaggregation Action Network Convening

October 24, 2023

PolicyLink

USC Dornsife
Equity Research Institute



About the National Equity Atlas

The National Equity Atlas is America's most detailed report card on racial and economic equity. We equip movement leaders and policymakers with actionable data and strategies to advance racial equity and shared prosperity.

www.nationalequityatlas.org

Our Work

- Produce innovative research to inform the field and influence policy debates
- Partner with communities to create tailored analyses that advance local campaigns
- Democratize access to equity data

Indicators

Research

Data in Action

INDICATOR
Racial Equity Index: Summary

ANALYSIS
July 23, 2020: The Racial Equity Index: A New Data Tool to Drive Local Efforts to Dismantle Structural Racism

EVENT
August 2020: Unlocking the Insights of Disaggregated Data

[GET EMAIL UPDATES.](#)

Research Approach

- **Campaign-driven:** Part of a broader policy change strategy.
- **Justice-driven:** Center dismantling anti-Black racism. Disaggregate data. Understand intersectional inequities. Co-create research products with grassroots and movement leaders.
- **Rigorous:** Back assertions with evidence. Acknowledge limitations. Check facts.
- **Accessible:** Write clearly and be accessible to our key audiences – policymakers and movement leaders.

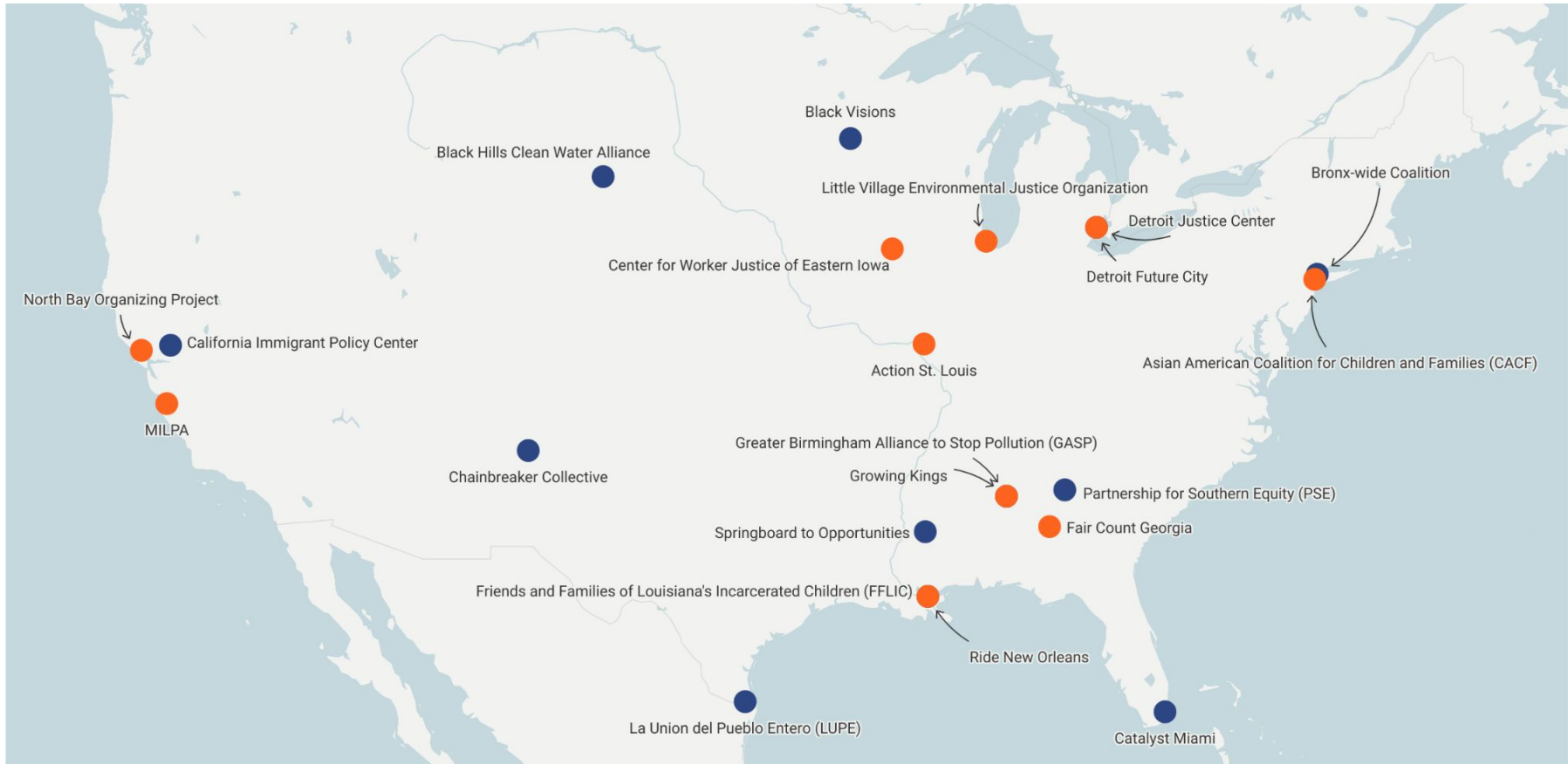


Figure 1. Types of organization within the power-building ecosystem

Source: "California Health and Justice for All Power-Building Landscape: A Preliminary Assessment", October 22, 2018
https://dornsife.usc.edu/assets/sites/1411/docs/2018TCE_PLA_PERE.pdf

How We Operationalize Research Justice

- Long-term partnerships with national advocacy networks and their grassroots members.
- Value experiential knowledge and incorporate it into our work.
- Engage grassroots leaders to define what we do.
- Compensate research partners and participants.
- Co-create and share ownership of research products.
- Provide rapid response research and data support to grassroots campaigns.
- Support capacity-building for grassroots leaders of color.



2023-2024

National Equity Atlas Fellows

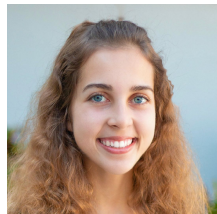


**National
Equity Atlas**

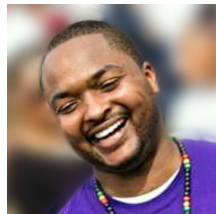
2022-2023 Fellows



Kyra Brown
Digital Strategist
Black Visions



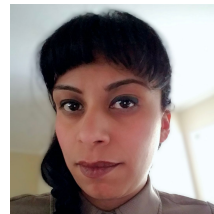
Natalia Brown
Climate Justice
Program Manager
Catalyst Miami



Marcus D. Carson
Founder and
Executive Director
Growing Kings



Nathan Cheung
Digital Organizer
California Immigrant
Policy Center



Cathy Garcia
Community Organizer
Chainbreaker
Collective



Carla Rae Marshall
Multi-Media Consultant
Black Hills Clean Water
Alliance



Treshika Melvin
Power Building
Director
Springboard to
Opportunities



**Jesus Alfredo
Montalvo**
Data Management
Specialist
LUPE



Sheba Y. Rogers
Divest/Invest Senior
Program Manager
Detroit Justice Center



**Marshall
Strawbridge**
Civic Engagement
Organizer
NWBCC



Justin Sykes
Associate
Partnership for
Southern Equity



Gina Womack
Director & Co-Founder
Families and Friends of
Louisiana's
Incarcerated Children

Fellowship Program Results

Fellows will:

- Increase their skills in data analysis and visualization to be able to produce data points and data products to use in their policy campaigns
- Network with other equity advocates across the country, engage in learning sessions
- Work with Atlas staff to design and develop their own data products to support their policy advocacy work



Fellowship Program Overview

Months 1-6: Focus on skill building

- Introduction to Atlas and research justice
- Accessing data sources/data sets
- Data visualization basics
- Centering a data equity approach
- Using an equity narrative frame

Months 7-12: Data product design and development

- Fellows scope out final data project
- Monthly sessions to support fellows to design and build their projects
- Tableau and data visualization software trainings
- Lead final webinars on Racial Equity Data Lab

National Equity Atlas Fellowship Showcase

Cohort 1


From March 2022 to March 2023, the [inaugural cohort of National Equity Atlas Fellows](#) worked to sharpen their data skills and develop data projects to strengthen their organization's policy and advocacy campaigns. Explore each of their projects to learn more about their bold ideas for advancing racial and economic equity in their communities.

PROJECT



Kyra Brown: Shifting Police Funding Toward Community Investment in Minneapolis

PROJECT



Natalia Brown: The People's Climate Atlas

PROJECT



Marcus Carson: Supporting Positive Youth Development in Birmingham, Alabama

PROJECT



Cathy Garcia: Fighting Displacement in Santa Fe, New Mexico

PROJECT



Carla Rae Marshall: Keep Black Hills Water Alive!

PROJECT



Treshika Melvin: Low Wages in Mississippi

PROJECT




Jesus Montalvo: Cameron County Civic Engagement Information Hub

PROJECT



Sheba Rogers: Advancing Equitable Approaches to Public Safety in Detroit

PROJECT



Justin Sykes: Building Community and Youth Power through the Metro Atlanta Racial Equity Atlas



Learn more about the National Equity Atlas Fellowship at:

<https://nationalequityatlas.org/fellowship>

Questions?

Selena@policylink.org

National Equity Atlas

PolicyLink

USCDornsife
Equity Research Institute